

Sense in Supplementation



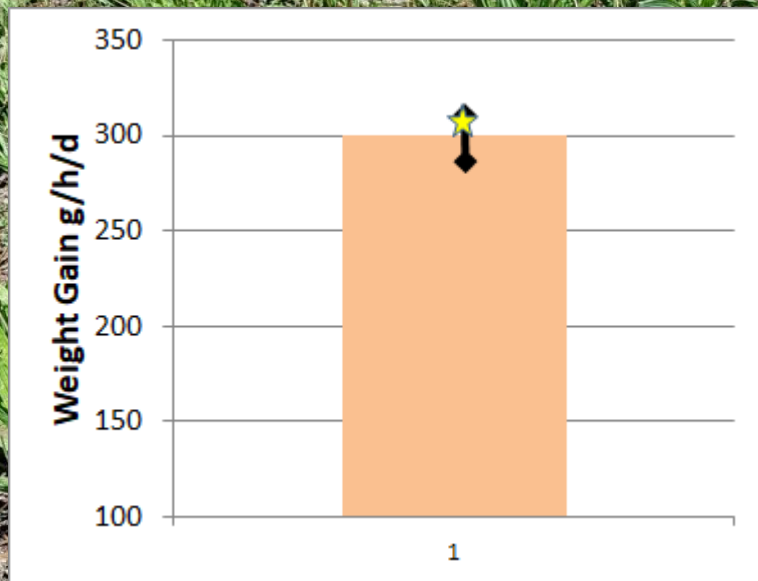
First Year Results

Trial Premise

- Results from the first Lamb Finishing Systems PDS suggested using supplements could help to more fully utilise the forage available without compromising lamb growth.



Average Weight gain over two grazing periods



478 lambs

11/11 – 8/12 (27 days)

Total Gain = 3968 kg
= 496 kg/ha

478 lambs

19/12 – 16/1 (28 days)

Total Gain = 4111 kg
= 514 kg/ha

478 lambs over 55 days

3286 lamb grazing days.

Ate 290g/h/d of MSM Pellets

Economics

Benefits

Lwt Gain	1010 kg/ha
Dressed	455 kg cwt/ha
Value	\$2745/ha
Other Grazing	18 DSE/ha
Base Line	8 DSE/ha
Extra / Forgone	10 DSE/ha
Value	\$557/ha
NET	\$3302/ha

Costs

4 month Fallow	2.64 DSE
Value	\$147/ha
Cost to Establish	\$435/ha
Total	\$582/ha
Amortised (3yr)	\$223/ha/yr
Fertiliser (30 DSE)	\$150
Commission	\$137
Freight	\$50
Husbandry	\$131
Supplements	\$365
Total Cost	\$907

PROFIT increase = \$2394/ha/yr ??



Supplementation PDS

- Seeks to compare the results from supplemented vs unsupplemented.
- Expectation
 - Supplemented to grow faster
 - Supplemented paddocks to last longer
 - Supplemented paddocks to carry more stock and yield more kg lamb/ha



Systems Measured

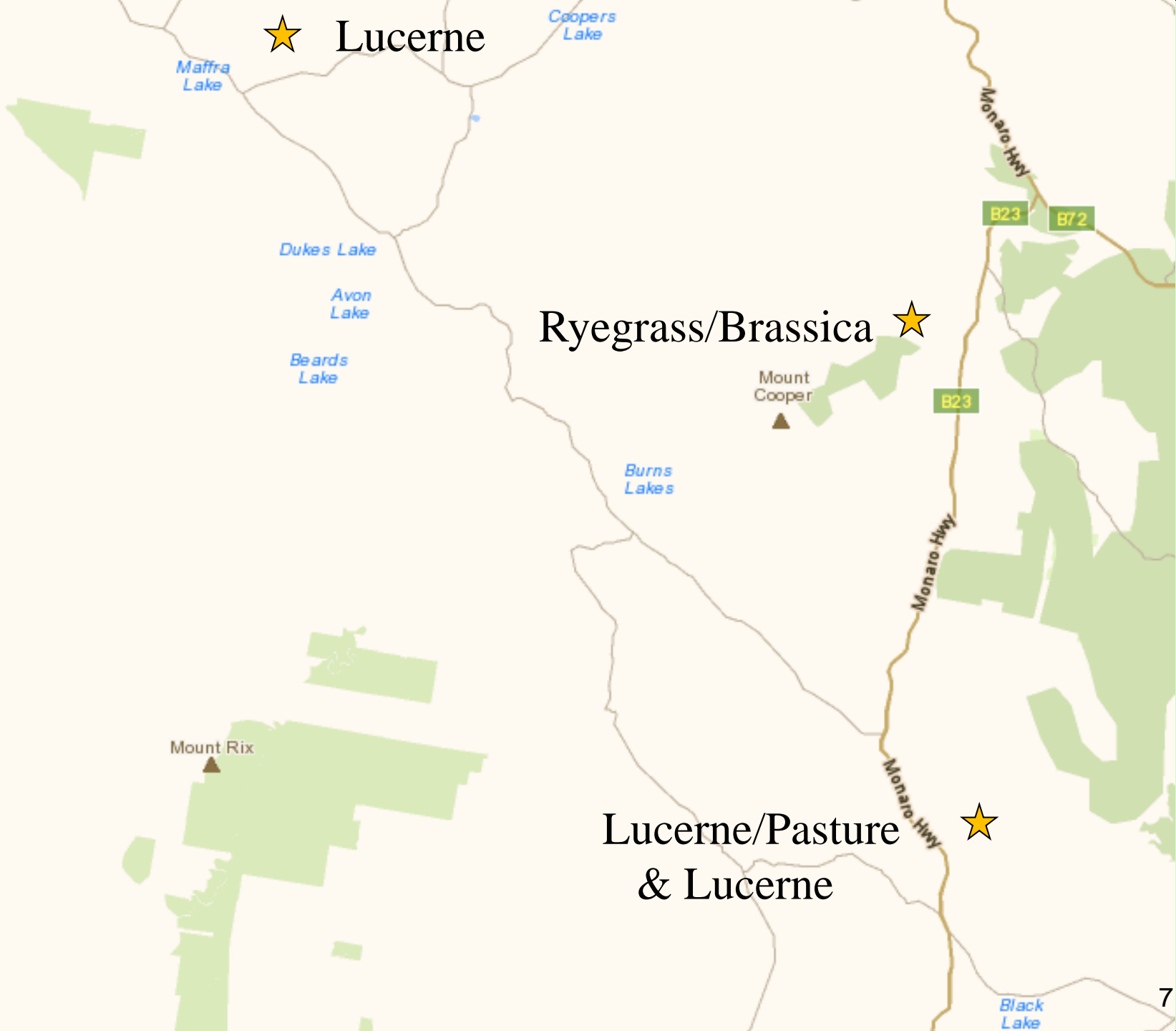
- Lucerne/ Pasture (Bibbenluke)
- Lucerne (Bibbenluke)
- Forage Brassica (Shirley)
- Lucerne (Maffra)



★ Lucerne

Ryegrass/Brassica ★

Lucerne/Pasture
& Lucerne ★



What was measured

- Lamb Weights (50 lambs)
 - Entry For each grazing
 - Exit
- Stocking rates
- Herbage Mass
 - Entry + Feed quality Test
 - Exit
- Supplements



Bibbenluke – Lucerne / Pasture

- 2 adjacent paddocks
- 8 ha (211 lambs)
- 11.8 ha (318 lambs) with access to supplements
- Grazed 16th Dec – 8th Jan
- Supplemented with DDG pellets
 - Ate only 157g/h/d



DDG feed test results

Dry Matter = 94%

Dry Matter Digestibility = 76%

Crude Protein = 21%

Crude Fat = 4%

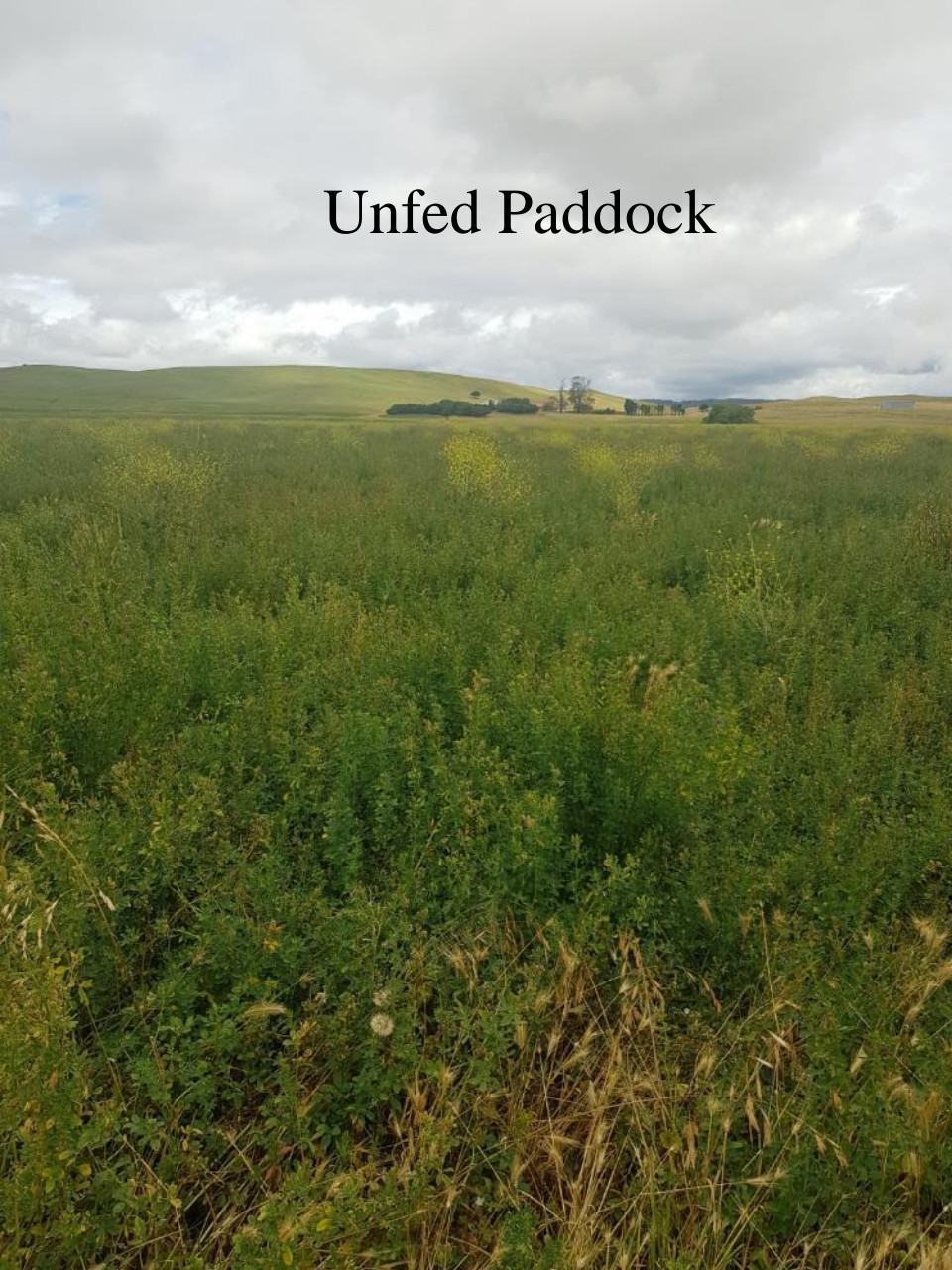
Metabolisable Energy = 12.3%



Fed Paddock



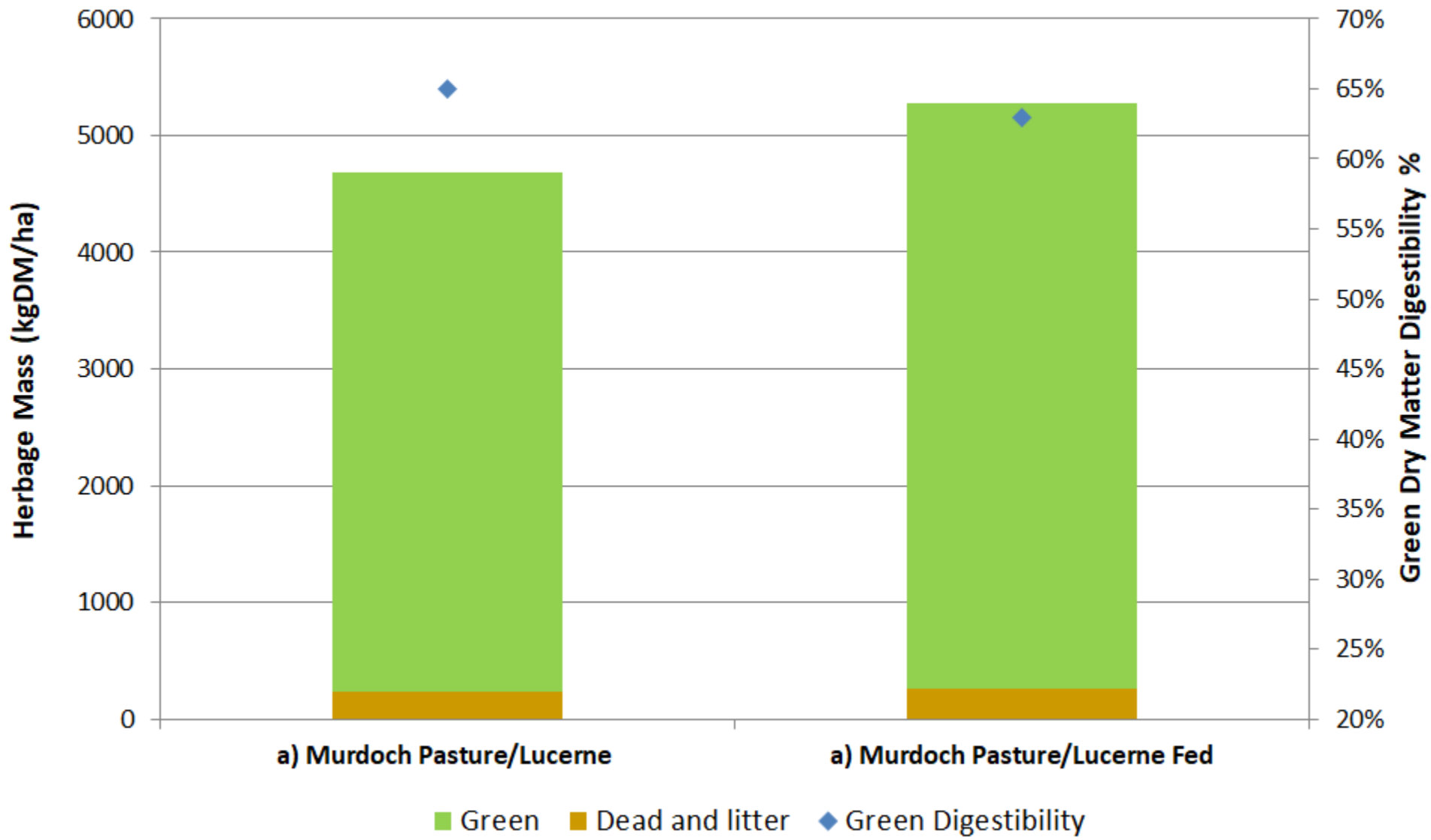
Unfed Paddock







Herbage Mass in project paddocks at the initial grazing



Digestibility

Default

This is the model's distribution of your herbage between the six digestibility classes.

Pasture I	80%	70%	60%	50%	40%	30%	
	0.37	1.44	1.91	0.90	0.09	0.04	t/ha

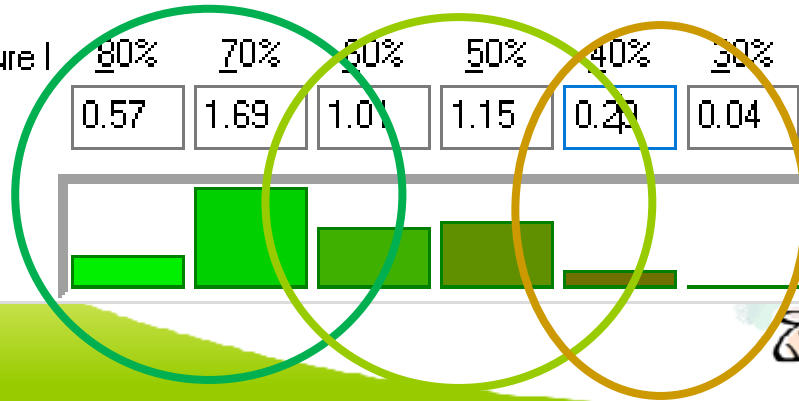


Total 4.75
of 4.75

Adjusted

This is the model's distribution of your herbage between the six digestibility classes.

Pasture I	80%	70%	60%	50%	40%	30%	
	0.57	1.69	1.01	1.15	0.23	0.04	t/ha

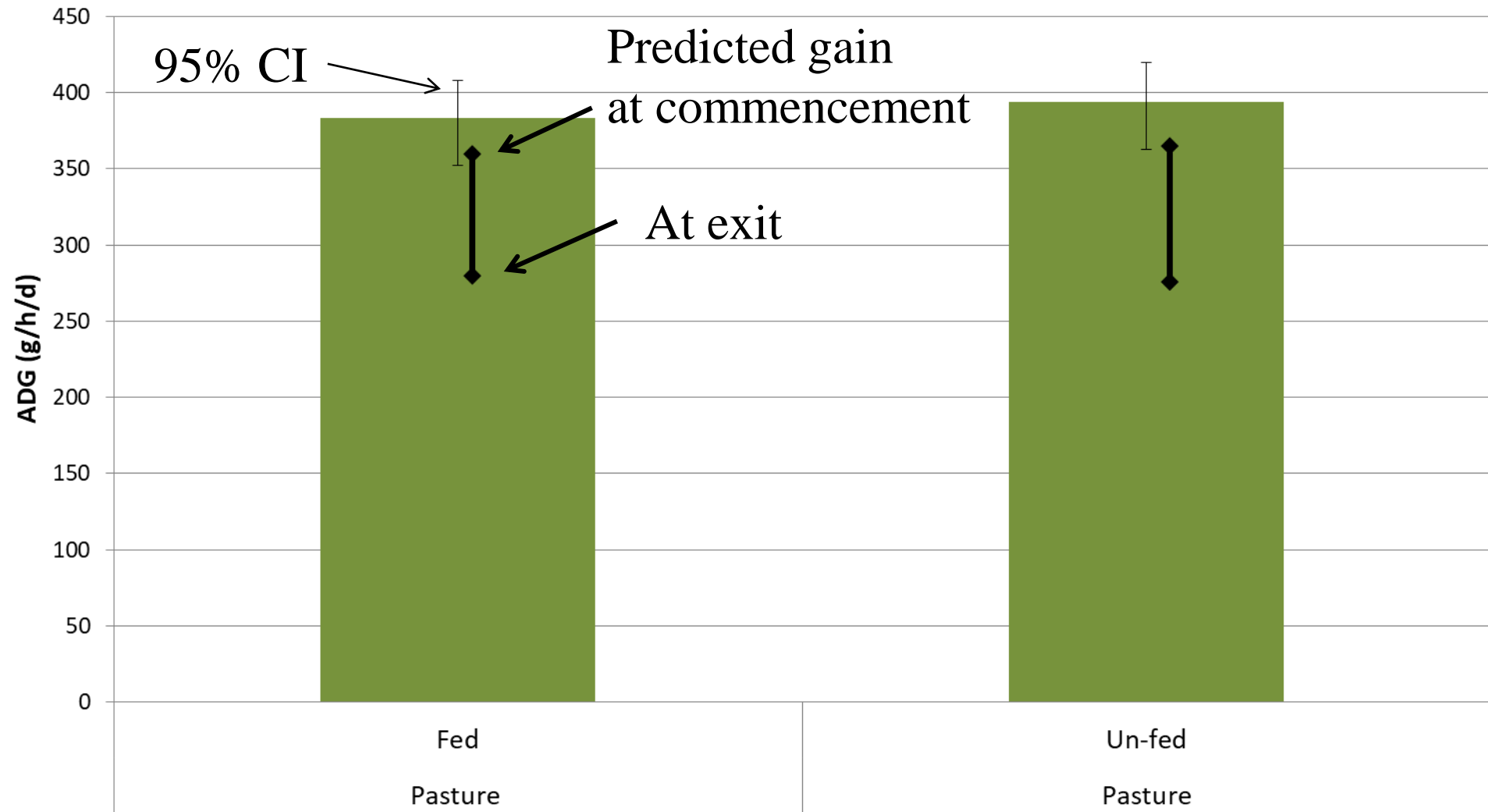


Total 4.75
of 4.75



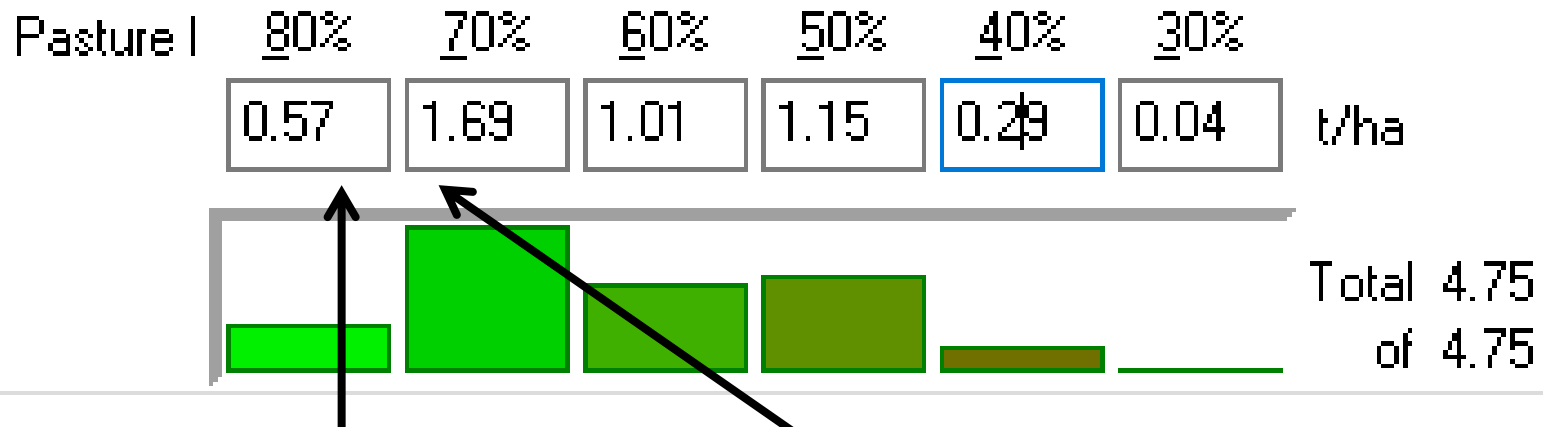


Lamb Weight Gain



Why no advantage by feeding ?

This is the model's distribution of your herbage between the six digestibility classes.



Average Diet Selected 79% Dig

Supplement Digestibility 76%

Bibbenluke – Lucerne

- 2 adjacent paddocks
- 8.6 ha (236 lambs)
- 10.7 ha (292 lambs) with access to supplements
- Grazed 8th Jan – 28th Jan
- Supplemented with DDG pellets
 - Ate only 113 g/h/d





Fed Paddock

A photograph of a lush green paddock with dense vegetation, likely a legume-based pasture, under a blue sky with scattered white clouds. The horizon shows rolling green hills.



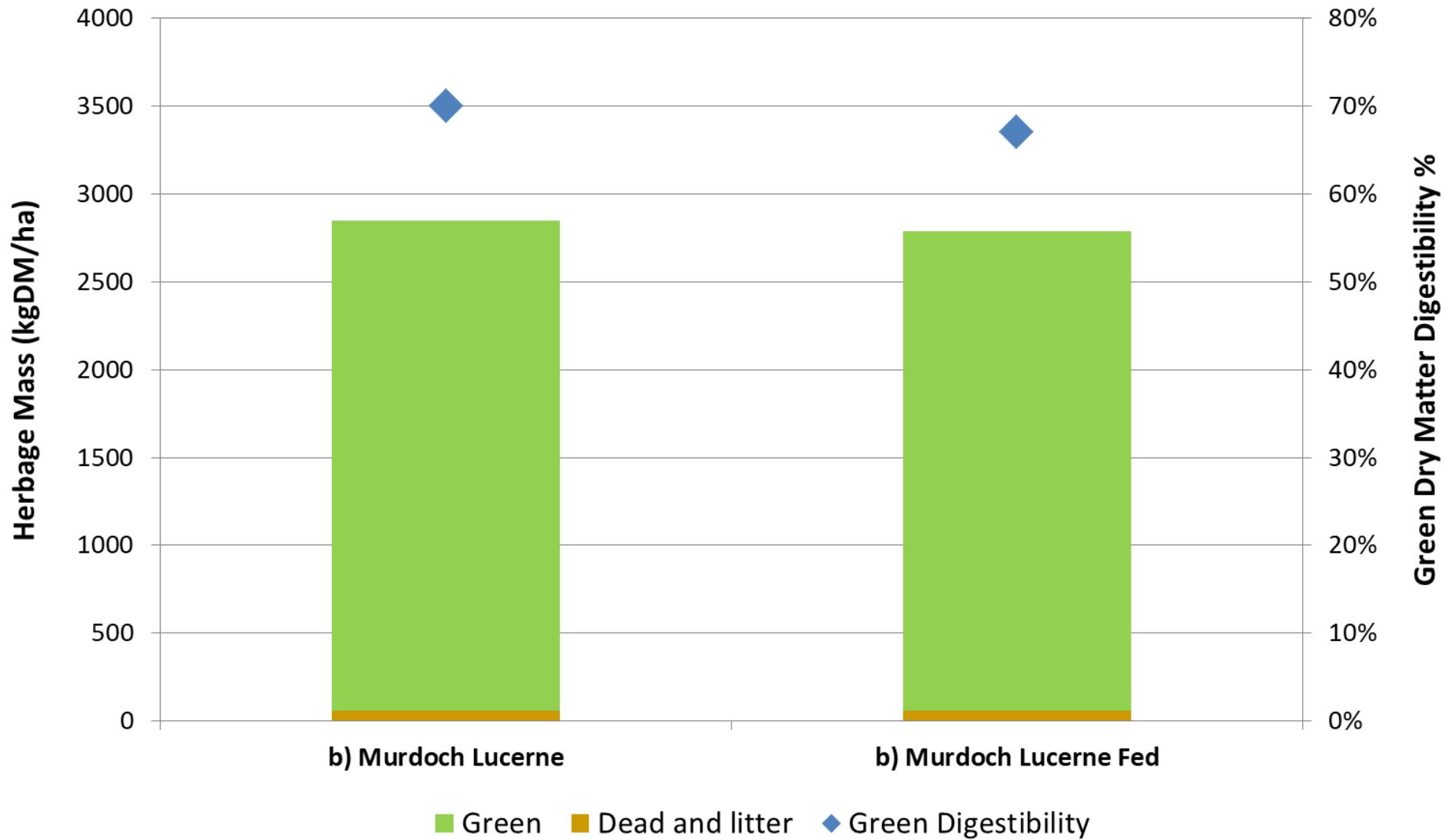
Unfed Paddock

A photograph of a paddock with sparse, low-growing vegetation, appearing less dense than the fed paddock. The background shows a similar landscape with rolling hills under a blue sky with white clouds.

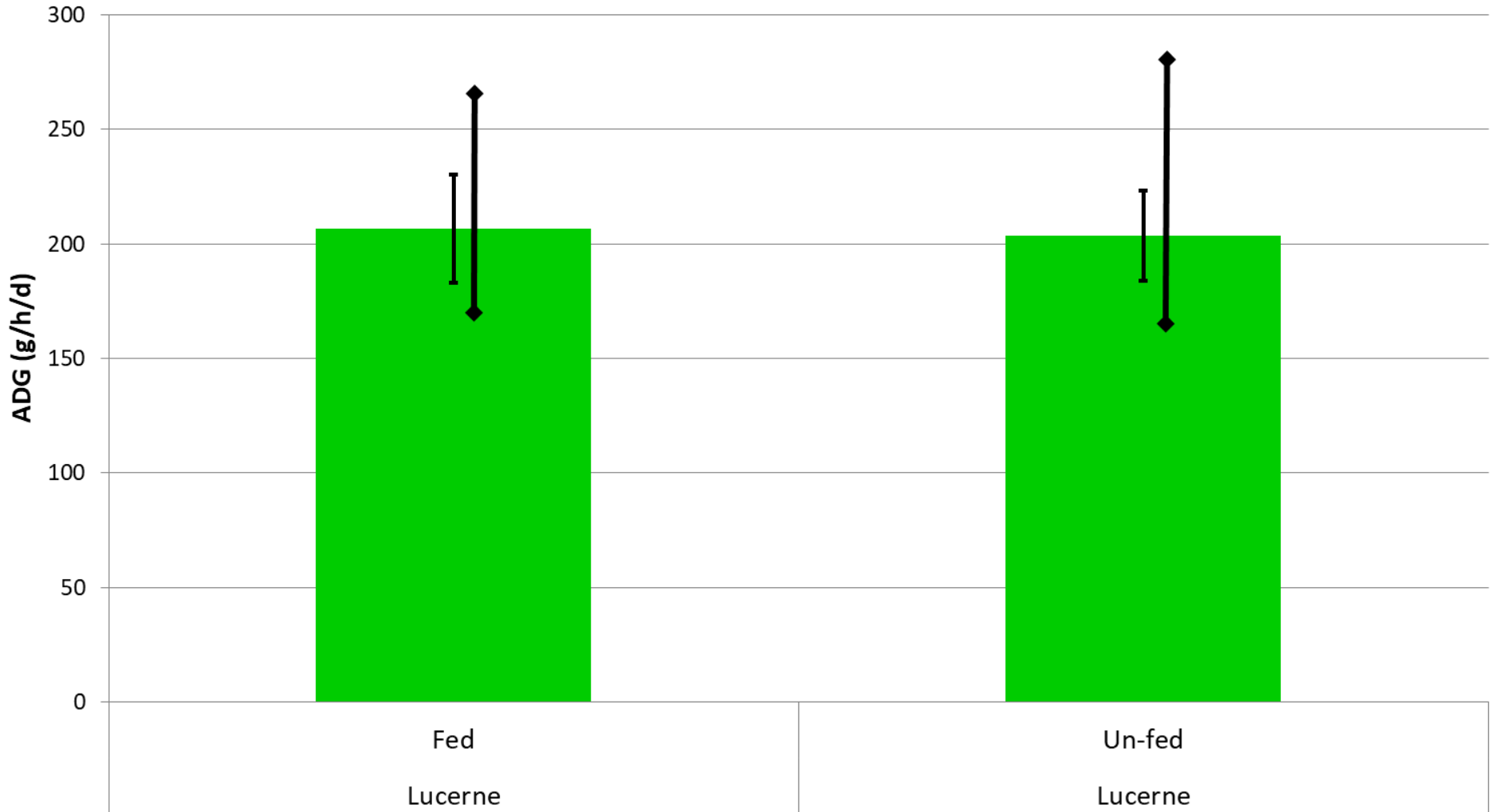




Herbage Mass in project paddocks at the inital grazing



Lamb Weight Gain



Shirley – Brassica / Ryegrass

- 2 adjacent paddocks
- 47 ha (250 lambs)
- 53 ha (250 lambs) with access to supplements
- Grazed 28th Apr – 26th May
- Supplemented with Barley
 - Ate only 60 g/h/d



Barley feed test results

Dry Matter = 91%

Dry Matter Digestibility = 87%

Crude Protein = 11.5%

Crude Fat = 2%

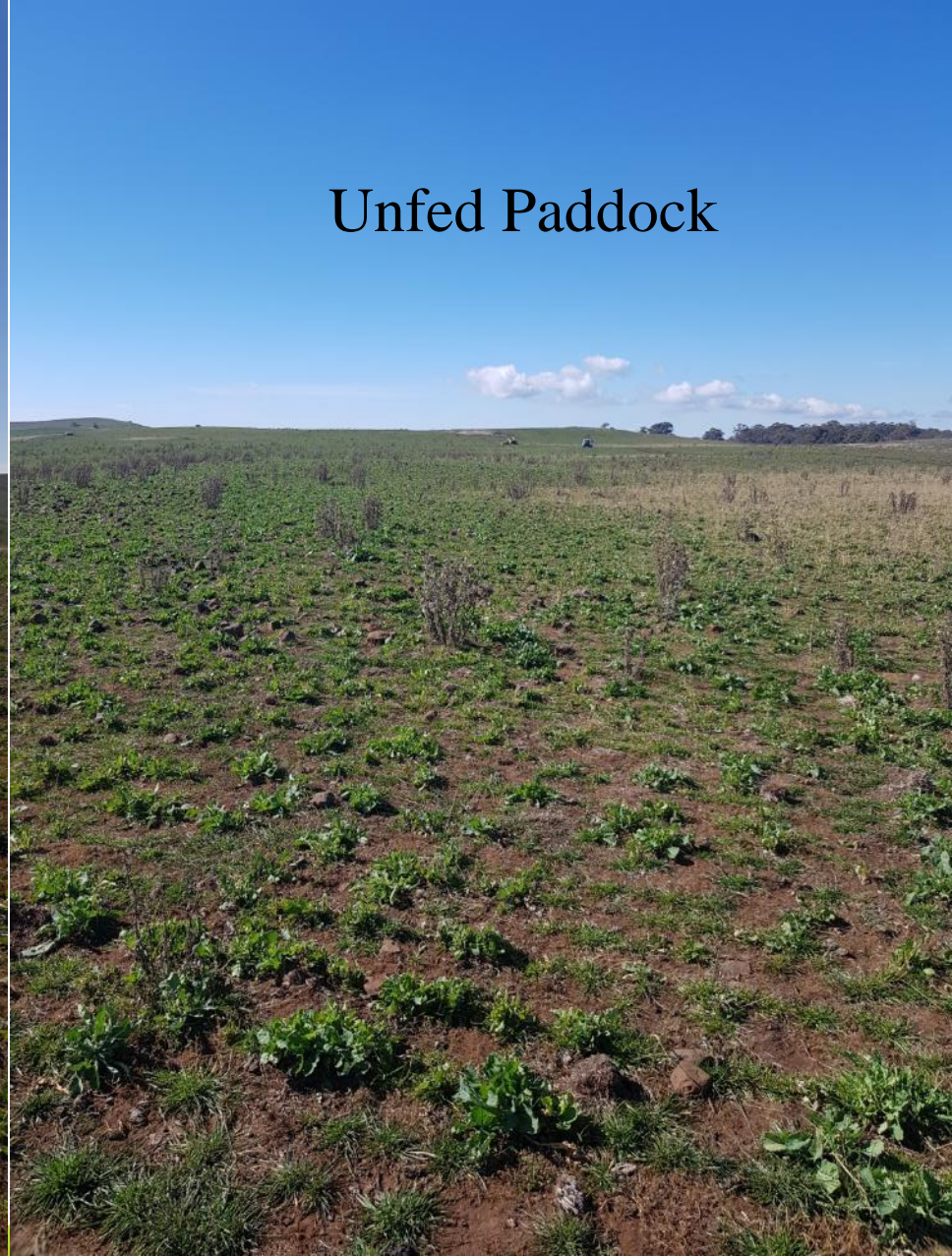
Metabolisable Energy = 13.3%



Fed Paddock

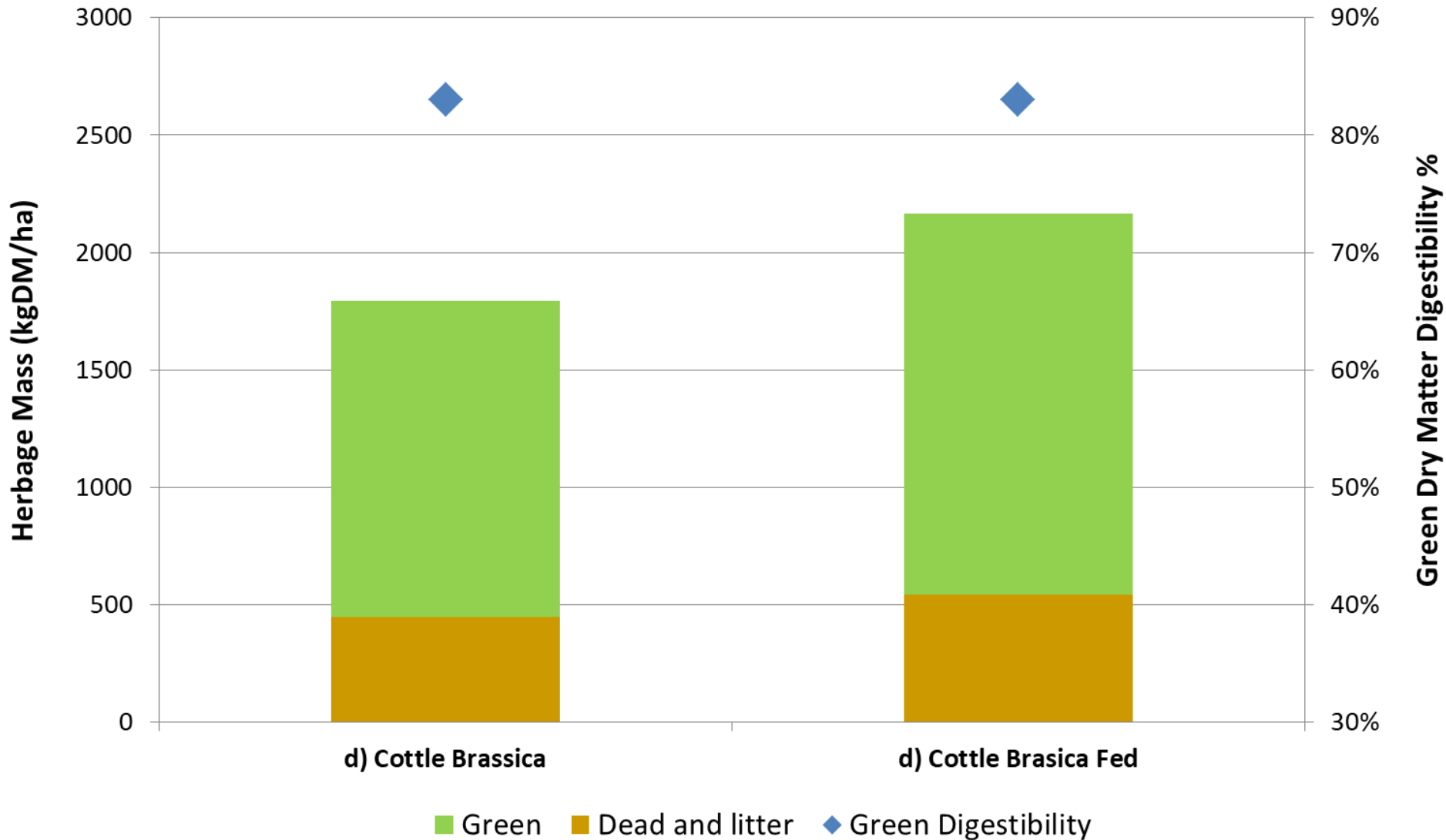


Unfed Paddock





Herbage Mass in project paddocks at the initial grazing



Remaining Herbage at Exit

Unfed Paddock

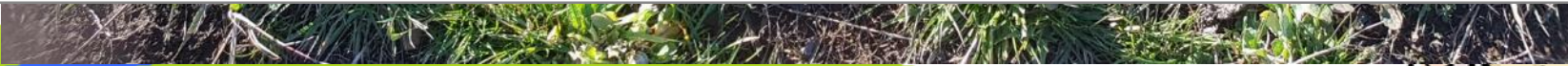
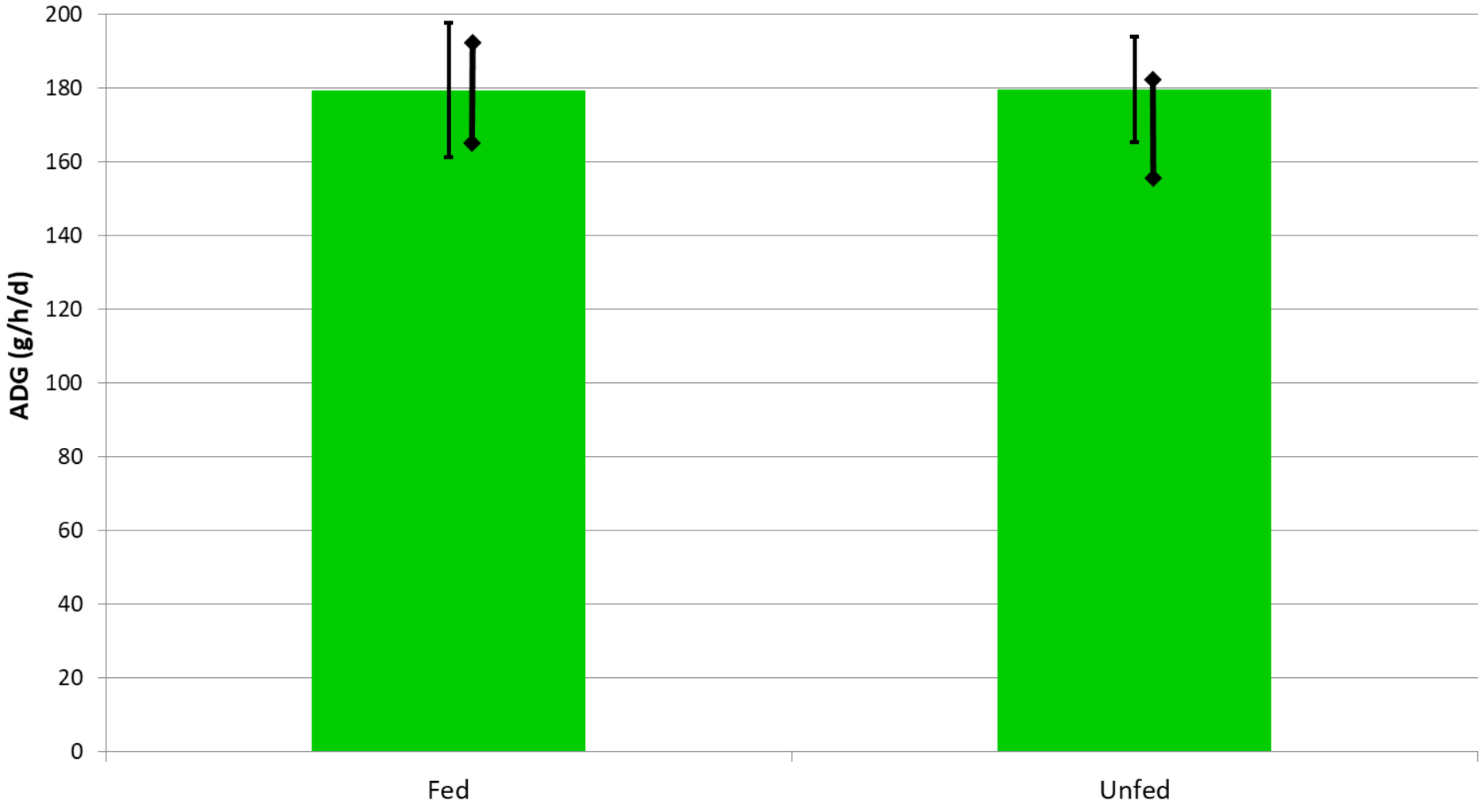


Fed Paddock





Lamb Weight Gain





GRAZ PROPHET CONSULTING

Maffra – Lucerne / Phalaris

- 2 separated paddocks
- 27 ha (336 lambs)
- 42 ha (684 lambs) with access to grain
- Grazed 28th Apr – 26th May
- Supplemented with wheat
 - Ate 346 g/h/d



Barley feed test results

Dry Matter = 89%

Dry Matter Digestibility = 94%

Crude Protein = 16.4%

Crude Fat = 4%

Metabolisable Energy = 14.2%



Fed Paddock

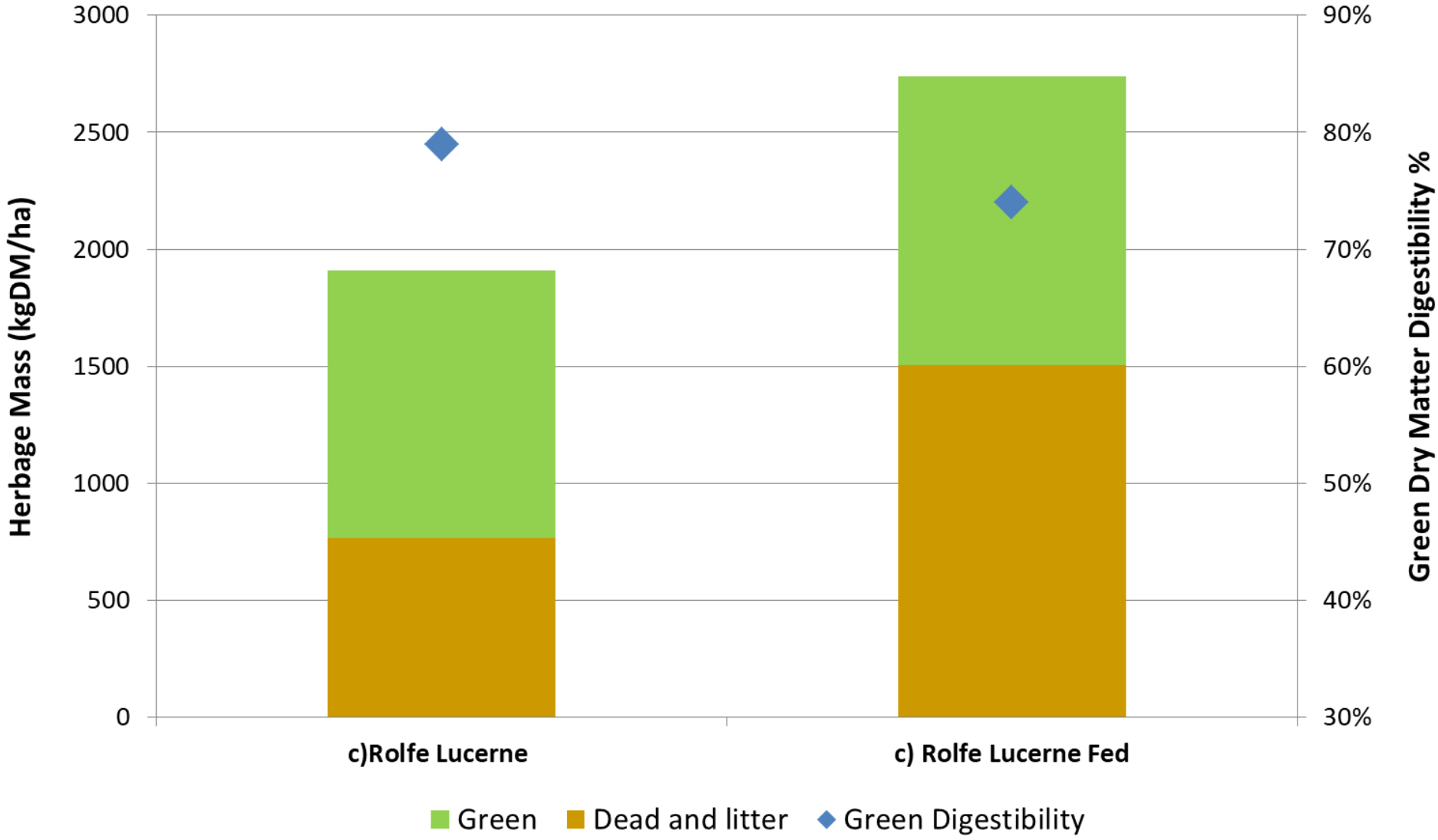


Unfed Paddock





Herbage Mass in project paddocks at the initial grazing



What might have happened

- Pasture not utilised heavily enough
- Insufficient introduction to grain
- Lambs already above their normal weight for age due to good spring.



What next

- Focus on pastures at lower levels of dry matter.
- Higher stock densities.
- Aim for higher utilisation before moving on.
- Stocking rate set higher in the fed paddock.
- Better introduction to grain?

